



SOLARVENTUS

**Generate your own green, renewable electricity with
a FREE wind turbine or solar PV array**



We install wind turbines and solar PV panels free of charge so you can generate your own electricity, reducing your costs and carbon footprint without having to invest the significant capital required for renewable energy systems.

The UK Government is committed to reducing our carbon emissions and has implemented a Feed-In Tariff system which provides long term certainty for producers of renewable energy. Under this new system, the energy companies must pay a generation and export tariff to those who generate electricity from renewable sources. We are able to make a return on our investment by utilising these tariffs.

With wind turbines ranging from 11kW to 225kW and solar panels starting at 10kWp our offer is best suited to larger energy users such as farmers, land owners, small holders, businesses, manufacturing and industry.

Email – enquiries@solarventus-energy.co.uk or call
Jonathan Colverson on 07787 393251
www.solarventus-energy.co.uk
SolarVentus Limited - Registered Company No: 07211603

How it works

In April 2010 the Government introduced the Feed-In Tariffs (also known as Clean Energy Cash Back). This scheme is intended to encourage small-scale renewable energy generation by providing long term guaranteed payments for small-scale generators. We use the Feed-In Tariffs to gain our return on investment.

The Feed-In Tariff consists of two payments, which are paid by the energy companies:

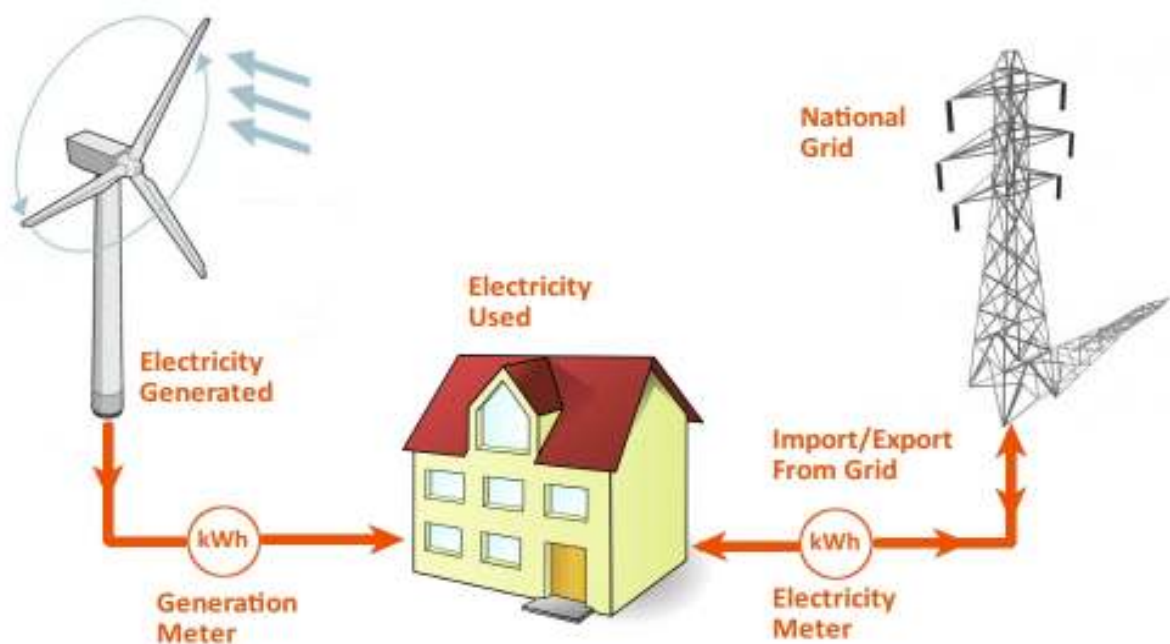
Generation tariff - paid for every kilowatt hour (kWh) of electricity that is generated and recorded via a generation meter. The generation tariff will be paid regardless of whether the electricity is used onsite or exported to the national grid.

Export tariff - paid for any excess electricity that is exported back to the grid.

Because the generation tariff is paid regardless of whether the electricity is used on site or exported, you can use the electricity free of charge whilst we still gain a return on our investment.

Grid Tie Explained

The turbine or solar panels will be Grid Tied. This means that any generated electricity that you do not use is fed back into the grid whereas at the times when you use more than you are generating, the shortfall is imported from the grid. You will continue to buy your imported electricity from your existing energy company.



The SolarVentus Offer

Subject to a free site survey by us and to planning permission (if required), we will install a wind turbine or solar array; in return you can use as much of the generated electricity as you are able to, free of charge for the next 25 years. We just ask that you agree to a 25 year lease and allow us to collect the generation and export tariffs which are paid by the energy companies.

We deal with the planning process from start to finish and also maintain and insure the equipment. We retain ownership and cover the full cost of purchasing, installation, planning fees, ongoing maintenance and repairs.

The Installations we Offer

We have a range of wind turbines and solar pv arrays to suit a range of locations.

Wind turbines (3 phase electrical connection required):

Gaia 133 11kW ~ typical output 25,000kWh

A27 225kW ~ typical output 350,000kWh

Solar panels (roof or ground mounted):

10kWp ~ requires 3-phase supply and 80m² of space

50kWp to 100kWp ~ requires 400m² to 800m² of space, electrical supply may need upgrade

Is Your Land Suitable?

We will perform a free site survey to assess the suitability for a wind turbine. Suitable sites should have an average wind speed of at least 5.0m/s at 10m above ground level (see our website for a guide on how to find your average wind speed). You will also need to have a 3-phase electrical connection.

Other considerations will be any obstructions such as large trees and buildings, especially in the direction of the prevailing wind (normally the South West) and meeting the requirements for planning permission.

For solar panels we require a south-facing roof that is in good condition or a suitable ground space. Locations for the installation should not be shaded by nearby trees or buildings. For installations larger than 4kWp a 3-phase electrical connection will be required.

Most roof mounted solar installations can be completed under Permitted Development. If you have a listed building or live in a conservation area, then planning permission will be required.

Benefits

Financial: Reduce your electricity costs for the next 25 years and guard against future rises in electricity costs.

No investment needed: Investing in renewable energy requires a significant amount of capital upfront which is then locked in for the long term. You can retain your own capital in a more liquid form: many of our clients prefer to invest spare capital back into their existing business.

No risk: No need to worry about maintenance and repair costs.

Green credentials: Improve the image of your business by making use of renewable energy.

Frequently Asked Questions

Q: What size turbines do you use?

A: *We use turbines in the 11kW to 250kW range. Hub heights range from 18m to 40m. See our website for more details.*

Q: Will we still have electricity from the turbine if we have a power cut?

A: *No, in order to connect to the grid we have to adhere to regulations that protect the safety of workers on the line. For safety reasons the turbine will shutdown in the event of power cut.*

Q: Can I see a fully installed and working installation?

A: *Yes, we can arrange for you to visit an installation.*

What Happens Next?

Send us an email or call Jonathan Colverson on 07787 393251 to arrange a site survey.

The site survey will enable us to confirm if our offer is viable and which turbine or solar panel array is best suited for your site. The site survey will take around one hour and we will need access to your electricity meter and consumer unit. The site survey is an ideal opportunity for you ask any questions you may have and is completely free of charge.

Email – enquiries@solarventus-energy.co.uk or call
Jonathan Colverson on 07787 393251
www.solarventus-energy.co.uk
SolarVentus Limited - Registered Company No: 07211603